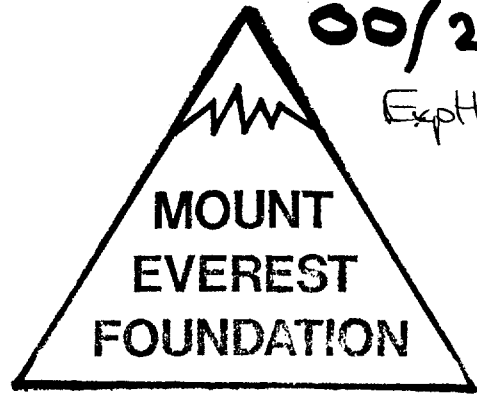


BMC

00/25

ExpHis



REPORT

PARBATI S.W RIDGE EXPEDITION 2000

TEAM

OLLY SANDERS  
MARTIN CHESTER  
IAIN PETER

ExpHis 00/25

## **Report on the Parbati South West Ridge Expedition September 2001**

We flew to Delhi on the 12<sup>th</sup> September and spent 3 days in Delhi dealing with the I.M.F and some freight we had shipped out. Our agent, Kash Venture Travel run by Mohon Tickoo was an excellent agent to deal with and helped to ensure the trip ran smoothly. The I.M.F appeared to be better organised and our liaison officer Arvin proved to be very helpful and capable. We left Delhi on the 15<sup>th</sup> September and arrived in Manihorai on the 17<sup>th</sup>, where we met our Nepalese porters, Head Porter Davim Singh, and Cook, Lalat.

The five-day trek up the Parbati Valley was incredible. Unfortunately, there is a dam project going on which will mean that this stunning walk will be lost within the next ten years. Base Camp was on a large flat area at                      It is obviously used by trekking companies taking groups up the Pin Parbati Pass, as there was lots of poorly buried rubbish. We sorted the rubbish out and burned as much as we could.

The next day we went to check out which valley we had to ascend, as it was not immediately obvious from Base Camp. It was a lot further than we thought. The following day was a rest day with the next day set aside for ferrying gear. While we were ferrying the gear we met some local shepherds who told us the weather normally deteriorated from the 5<sup>th</sup> September onwards. Our Liaison Officer offered to carry a load and we set off up the left-hand side of the glacier, eventually crossing it adjacent to our valley. This involved some serious route finding through the glacial bridges over the river. The path was marked but changed all the time. We found a flat sandy campsite a third of the way up the first valley, which became Camp One. We returned to Base Camp for a rest day.

On the 27<sup>th</sup> September we ferried the gear that we needed up to Camp One. The weather remained settled, but we knew it was supposed to deteriorate from the 5<sup>th</sup> and our porters were arriving on the 9<sup>th</sup> to take us out. The following day we started to ferry gear up the glacier from Camp One. At the end of the glacier it bears right up another glacier. It was here that at last we got our first glimpse of the mountain and our ridge. We found a boulder half way up the glacier, which was large enough to pitch the tent. This became Camp Two. We returned to Camp One to pick up the rest of the gear, which we ferried up to Camp Two the following day.

Then started the ferrying of gear up to Camp Three at the base of the ridge. Here we had to bivvy on snow as we had decided against taking the tent, leaving it at Camp Two - a big mistake. The weather deteriorated at Camp Three and we went back to Base Camp for a rest. We returned two days later with the tent. An early start up the glacier left us at the foot of the first corner system that led to the ridge. Two Very Severe pitches in big boots eventually led us to the ridge. These first pitches were very loose and dangerous. The initial climbing on the ridge was about E1 improving to Very Severe. This eventually led us to a flat ledge where we bivvied.

It snowed late afternoon and evening, a pattern of weather that seemed to continue. We dumped our big boots, crampons and ice axes on the ledge and continued on with just rock boots and bivvy gear.

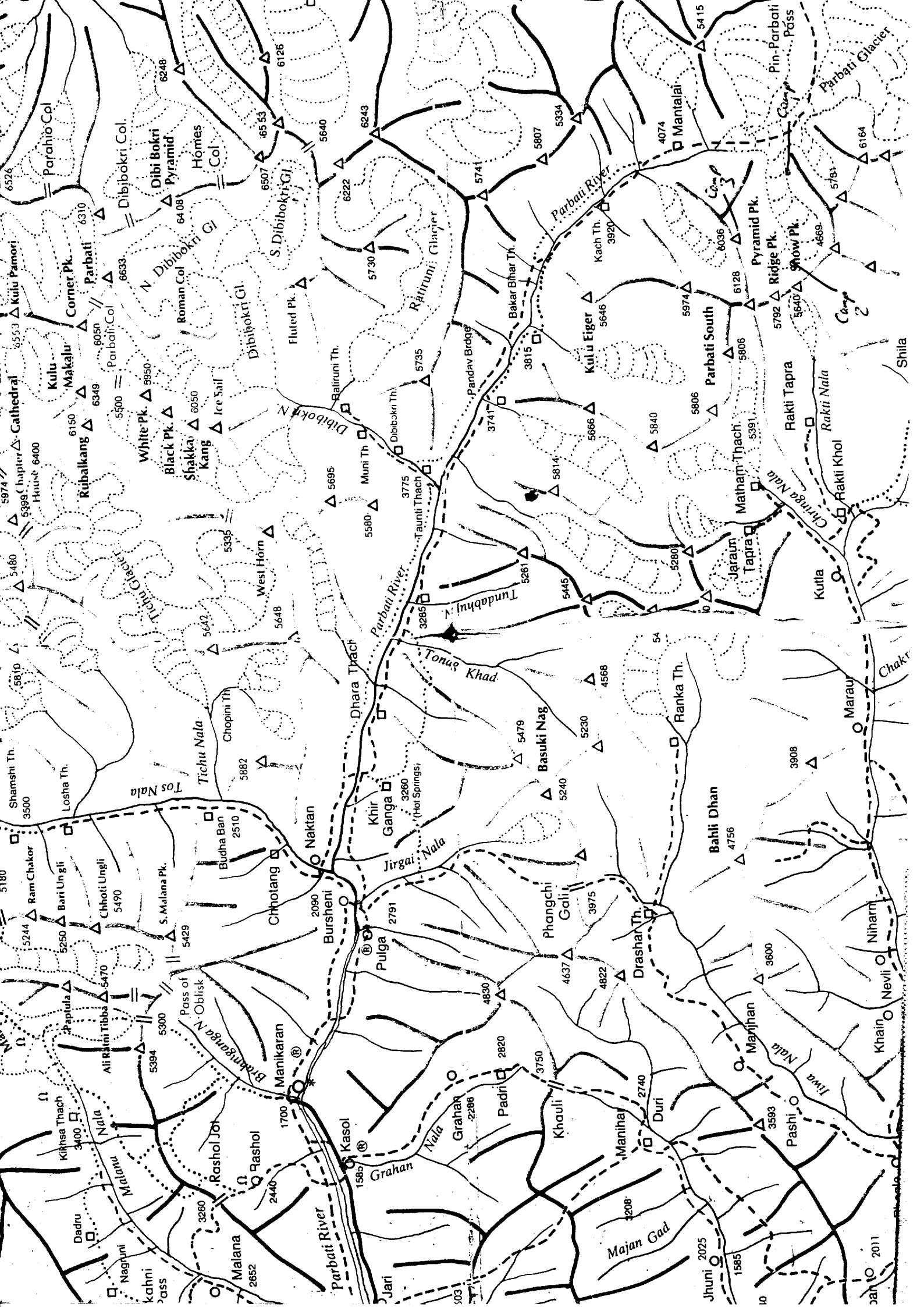
An awkward VS/HVS traverse led us back onto the ridge. The climbing was tremendous - good granite and excellent friction. A series of ribs and grooves all at VS/HVS brought us to a ledge where there was a sudden change in rock type. The rock here was loose and dangerous and we found old abseil tat. These bands appeared to go on for at least four or more pitches. The upper section of the face looked very steep, possibly aid climbing terrain? There were features in the face but it looked hard climbing.

Due to a combination of poor rock and snowfalls which prevented us from climbing everyday from mid afternoon we decided to retreat. Descending off the route is awkward; you cannot go straight down the face as its leads into incredibly loose ground. This meant that we had to retrace our steps along the ridge with some diagonal abseils and occasional bivvies. We retreated back to Camp Three and over the next few days stripped down the Camps. We arrived back at Base Camp around the 6<sup>th</sup> September, three days before the porters arrived for the trek out.

The ridge is stunning with some excellent rock. We tried it alpine style allowing four days, but the rotten band and the top section looked very hard. It would be very hard to trawl gear for any form of big wall attempt. The weather we encountered was light snow enough to stop us rock climbing, but not enough to put snow down for water re-supply.

On the trek out we got a glimpse of the back of the mountain and this looks a serious proposition to descend but would require lots of gear. We took a beefed up climbing rack and two nine millimetre ropes and lots of tat, all of which we used. The team of three worked well, although we rarely brought two people up together because of the nature of the terrain. It will be a shame when the valley is closed as you may have to access the mountain from the Pin Parbati Pass side.

Thanks go to the M.E.F, B.M.C, Welsh Sports Council and Terra Nova for use of their tents.



ACCOUNTS AND EXPENSES FOR PARBATI S.W RIDGE EXPEDITION

FLIGHTS X3	£1500
PEAK FEE & LO	£ 1612
TREKING CO FEES POTRERS FOOD ETC	£2900
FREIGHT	£ 100
HOTELS (DELHI)	£270
PERSONAL EXPENSES OF TEAM	£ 750
VISAS ,ADMIN & MISC	£200
EQUIPMENT	£ 500
INSURANCE FOR TEAM	£600
<u>TOTAL</u>	<u>£8432</u>

MONEY RECEIVED

<u>WELSH SPORTS COUNCIL</u>	<u>£1000</u>
<u>BMC&amp; M.E.F</u>	<u>£2400</u>

The compilers of this report and the members of the expedition agree that any or all of this report may be copied for the purposes of private research

