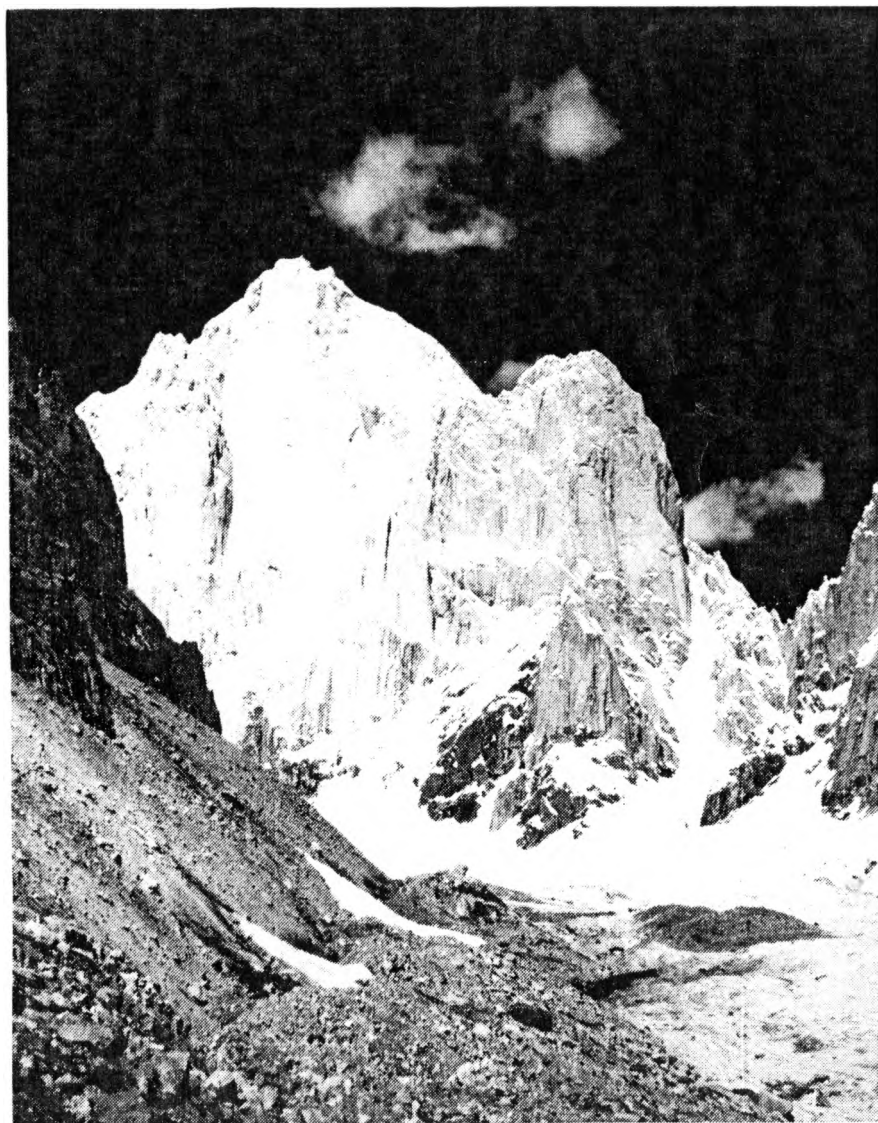


West Ridge

1992

LATOK 2



SUMMARY.

Karakorum Pakistan 20th July 1992 to 11th September 1992.

The expeditions aim was to climb the West Ridge of Latok II. The approach by the new jeep road which since 1987 has progressed from Dassu to just short of Askole proved very difficult and slow, due to landslides and constant erosion. However with the aid of three high altitude porters, advanced base camp was established at 17,500 ft. within 12 days of leaving Rawalpindi, giving rise to great optimism. It took three more days to attain Camp 1 at 20,000 ft. and place a tent. Bad weather forced a retreat when food ran out. Twice this same cycle followed, bad weather forcing us down, going back up in the good weather until we conceded we did not have enough time to reach the summit and to commit men and more equipment high would be futile. A careful retreat followed, clearing equipment from the mountain except for some fixed ropes, which under the conditions we were forced to leave.

NOTE: With the unreliable condition of the jeep road to Askole, if parties are to avoid being trapped, it would be prudent to budget for the alternative of porters at a much higher cost, for continuity, in the event of the road being impassable.

IN MEMORIAM

Don Morrison

Sheffield climber Don Morrison led three expeditions to the Biafo area in 1971, 1975 and 1977. Some 1992 members were veterans of those ventures, and Ted Howard accompanied Don on the first ascent of Pamche (marked 5584m) west of the Biafo in 1975.

PAMSHE,

Don died in a crevasse fall on the Latok glacier in 1977, when his body was irrecoverable. Japanese climbers found it emerging from the ice in 1985, and placed it at an accessible point, but snow prevented the British group in 1987 from doing this.

Early on August 3rd 1992 Tony Riley and Paul Nunn found sparse remains and equipment. It was more than a mile from the fatal crevasse. Equipment was immediately identifiable.

Dr Peter Jackson supervised recovery and at base camp made an official examination. Don's remains were buried under the memorial high on moraines above base camp. This cairn was built in 1977 by Pat Fearnough, Patrick Green, Tony Riley and Paul Nunn, in memory of Don and later of Pat Fearnough, who died in a Braldu landslide returning in 1978.

Liason officer Asgar Ali informed the authorities and helped contact Don's family.

Expedition Report

Ted Howard arrived in Rawalpindi on 13th July 1992 in advance of the team to complete as many of the formalities as possible before the main party landed on 20th July. Arrangements were made for the helicopter bond, insurances were purchased for the LO, sirdar cook and porters and the British Embassy visited in good time. With the main party's arrival, the briefing with the Tourism Office was completed on the 21st July when we were formally introduced to our Liason Officer, the mountain guide Asghar Ali.

Four days were then lost as we waited for freight erroneously sent to Karachi rather than Islamabad. This was very frustrating, but eventually sorted out with great help from our agents, Trans-Pack in Islamabad. To save time and maintain momentum, five members flew to Skardu to make on-going arrangements, meet Sirdar Fida Hussein and make local purchases of porter food and complete our requirements. Continuing problems with flights, and risk of having our baggage split between them and delayed, decided the remaining group to travel overland and be sure (as far as one can be on the KKH!). All went well and we were all together at the Karakorum Inn in Skardu on July 25th.

The District Commissioner was visited, final details fixed for helicopter rescue with the Army and with all purchases made we left for Askole on July 27th.

In Shigar the Deputy Commissioner had to sit in judgement on a 'union' dispute involving local porters who did not wish to work with or allow passage to porters from other valleys. Shigar valley porters and Hushe porters do not see 'eye to eye' on an attempt to set up a porters' union. At a hastily assembled court, the Assistant Commissioner ruled that we could proceed with our Kaphlu sirdar, cook and a few 'outside' porters. The balance of the porters, by regulations, had to come from the Shigar/Askole Valley.

On we travelled until just before Dusso where a landslide had 'taken the road out'. Four hours later we were on our way having driven up the main river bed and manhandled our jeeps up a steep field. After good progress up the Braldu Valley past Chokpoing the jeeps traversed a particularly unstable earth slope, which promptly collapsed into the river behind taking almost all the road with it. Several exciting nullahs later we camped close to the road head below Askole after fourteen hours of dangerous travelling.

Sixty eight porters carried loads in four and a half days via the Biafo Gyang and Uzzun Blakk Glaciers. On August 2nd we reached base camp below the Ogre's Thumb at 15500 feet. Three good high altitude porters were retained and equipped from personal resources as one porter load containing some of their gear, a tent and other items went missing between Skardu and base camp. In the next four days

Customs & Immigration Procedures.

Refer to Mountaineering Rules & Regulations 1987 issued by the Tourism Division when applying for a Peak.

Administration of the Expedition in the Field.

If you can't manage this, you should'nt be going.

Specialist Equipment.

Marker poles are a great advantage on the tricky glaciers.

Medical arrangements.

We had a G.P. as a team member who handled all the medical requirements.

Special Hazards.

Contaminated water, road blockage due to landslides and flooding. Social unrest with indiscriminate shooting around Chilas and Gilgit.

Route report.

P.I.A. U.K. to Islamabad.

P.I.A. Islamabad to Skardu (5 members).

Two Hiace mini buses with all freight by road (2 days) via Chilas to Skardu (3 members & L.O.)

4 local jeeps Skardu to Askole. (10 hours).

68 Porters Askole-Namla-Mango-Bantha-Base Camps under Ogres Thumb. (4 days).

Diary.

Overall dates: 12th July 1992 to 11th September 1992.

Advance party arrived Rawalpindi 13th July 1992.

Rest of party arrived 20th July 1992.

Left Rawalpindi 24th July 1992.

Arrived Skardu 25th July 1992.

Left Skardu 27th July 1992.

Arrived base camp 2nd August, 1992.

Occupied advance base 6th August, 1992.

Occupied camp at 20,000 ft on col 15th August 1992.

Driven down to base by bad weather 17th August 1992.

re-occupied camp at 20,000 ft 21st August 1992.

Driven down to A.B.C. by bad weather 23rd August 1992.

Back to 20,000 ft 24th August 1992.

Climb abandoned.

Left base camp 30th August 1992.

Arrived Skardu 1st September 1992.

Arrived by K.K.H. at Rawalpindi 6th September 1992.

Flew out of Rawalpindi for U.K. 11th September 1992.

Customs & Immigration Procedures.

Refer to Mountaineering Rules & Regulations 1987 issued by the Tourism Division when applying for a Peak.

Administration of the Expedition in the Field.

If you can't manage this, you should'nt be going.

Specialist Equipment.

Marker poles are a great advantage on the tricky glaciers.

Medical arrangements.

We had a G.P. as a team member who handled all the medical requirements.

Special Hazards.

Contaminated water, road blockage due to landslides and flooding. Social unrest with indiscriminate shooting around Chilas and Gilgit.

Route report.

P.I.A. U.K. to Islamabad.
 P.I.A. Islamabad to Skardu (5 members).
 Two Hiace mini buses with all freight by road
 (2 days) via Chilas to Skardu (3 members & L.O.)

 4 local jeeps Skardu to Askole. (10 hours).

 68 Porters Askole-Namla-Mango-Bantha-Base Camps
 under Ogres Thumb. (4 days).

Diary.

Overall dates: 12th July 1992 to 11th September 1992.

Advance party arrived Rawalpindi 13th July 1992.
 Rest of party arrived 20th July 1992.
 Left Rawalpindi 24th July 1992.
 Arrived Skardu 25th July 1992.
 Left Skardu 27th July 1992.
 Arrived base camp 2nd August, 1992.
 Occupied advance base 6th August, 1992.
 Occupied camp at 20,000 ft on col 15th August 1992.
 Driven down to base by bad weather 17th August 1992.
 re-occupied camp at 20,000 ft 21st August 1992.
 Driven down to A.B.C. by bad weather 23rd August 1992.
 Back to 20,000 ft 24th August 1992.
 Climb abandoned.
 Left base camp 30th August 1992.
 Arrived Skardu 1st September 1992.
 Arrived by K.K.H. at Rawalpindi 6th September 1992.
 Flew out of Rawalpindi for U.K. 11th September 1992.

ACKNOWLEDGEMENTS.

We received generous support from many organisations and individuals to whom we offer our sincere thanks.

Financial support came from:

British Mountaineering Council.
Mount Everest Foundation.

Donations of food and drink came from:

The Minema, Knightsbridge.
Tate & Lyle.
Daniel Quiggin & Son.
Colman's of Norwich.

Donations of equipment and clothing came from:

Rab Down Equipment.	Sleeping Bags.
Phipps Fare Ltd.	Supplied Wind Suit material.
Touchstone.	Made up Wind Suits.
Allcord Ltd.	Fixing Rope.
Phoenix Mountaineering.	Loan of Tents. helmets
Badher Sports.	Koflach Boots.
Dawson Consumer Products Ltd.	Duofold expedition underwear.
Westlec of Haverfordwest.	Batteries.
Buffalo Clothing.	Buffalo clothing.
Karrimor Int. Ltd.	Rucsacs.
Taymar Ltd.	Epigas & Stoves.
Davey Jones.	Loan of Tents & Pressure Stoves.
Brummie Stokes.	Loan of Radios.
Cairngorm Rope Co.	Climbing Rope.
Joe Brown	

Deadmen/ice stakes/tape

The Expedition is indebted to the following people for their assistance.

Keith Miller.
John Wilkinson.
Paul & Margaret Richards.
Liz Coy & David Webster.

We would like to offer personal thanks to the following who kindly helped in a variety of ways.

Tim Greening.	Karakorum Experience.
Mohammad Qamar-ur-Rashid.	Transpack, Islamabad.
Tariq Haroon & Imran Ahmed Ch..	Paradise Inn, Rawalpindi.
Don Adamson (2nd Secretary)	British High Commission, Islamabad.
Aaghar Ali (Alpine Guide)	Liaison Officer.
Fida Hussain.	Expedition Sirdar.
Sajjatt Hussain.	Expedition Cook.
W. Ruthven.	Secretary - M.E.F.
Shane Winsor, Expedition Advisory Centre.	For expedition report format.

All party 26th July - 27th July 1992 - Skardu.

Karakorum Inn.....	149.00
Paraffin, cigarettes, L.O. provisions, local food.....	68.00
Four Jeeps cost Skardu - Askole.....	194.00

En route - Skardu - Askole.

Food and drink, camp fees.....	11.00
--------------------------------	-------

En route - Askole - Advance Base Camp - 30th July - 2nd August 1992.

Sixty eight Porters paid off.....	1438.00
Three high altitude Porters paid off.....	137.00
Extra food from Askole.....	34.00

<u>Advance party out - 25th August 1992.....</u>	85.00
--	-------

Base Camp - Askole - 30th August - 1st September 1992 incl.

Twenty three Porters & one Sirdar paid off.....	419.00
---	--------

Askole - Skardu.

Two Jeeps.....	102.00
----------------	--------

Skardu - 1st September - 4th September 1992.

One Cooks pay for 40 days.....	191.00
One Guide/Sirdar pay for 40 days.....	319.00
Travel equipment to Khaplu for above.....	10.00
Karakorum Inn.....	153.00
Airport transport and arrangement costs of cancelled flights...	34.00

En route - Skardu - Gilgit - Rawalpindi - 5th September - 6th September 1992.

Two Jeeps to Gilgit.....	123.00
Meals en route.....	12.00
One Hiace Mini Bus - Gilgit to Rawalpindi.....	104.00

Party (6 members) Rawalpindi - 6th September - 10th September 1992.

Hotel Paradise.....	271.00
Business Taxes.....	32.00
Meals out of Hotel.....	96.00

All party 26th July - 27th July 1992 - Skardu.

Karakorum Inn.....	149.00
Paraffin, cigarettes, L.O. provisions, local food.....	68.00
Four Jeeps cost Skardu - Askole.....	194.00

En route - Skardu - Askole.

Food and drink, camp fees.....	11.00
--------------------------------	-------

En route - Askole - Advance Base Camp - 30th July - 2nd August 1992.

Sixty eight Porters paid off.....	1438.00
Three high altitude Porters paid off.....	137.00
Extra food from Askole.....	34.00

<u>Advance party out - 25th August 1992.....</u>	85.00
--	-------

Base Camp - Askole - 30th August - 1st September 1992 incl.

Twenty three Porters & one Sirdar paid off.....	419.00
---	--------

Askole - Skardu.

Two Jeeps.....	102.00
----------------	--------

Skardu - 1st September - 4th September 1992.

One Cooks pay for 40 days.....	191.00
One Guide/Sirdar pay for 40 days.....	319.00
Travel equipment to Khaplu for above.....	10.00
Karakorum Inn.....	153.00
Airport transport and arrangement costs of cancelled flights...	34.00

En route - Skardu - Gilgit - Rawalpindi - 5th September - 6th September 1992.

Two Jeeps to Gilgit.....	123.00
Meals en route.....	12.00
One Hiace Mini Bus - Gilgit to Rawalpindi.....	104.00

Party (6 members) Rawalpindi - 6th September - 10th September 1992.

Hotel Paradise.....	271.00
Business Taxis.....	32.00
Meals out of Hotel.....	96.00

