

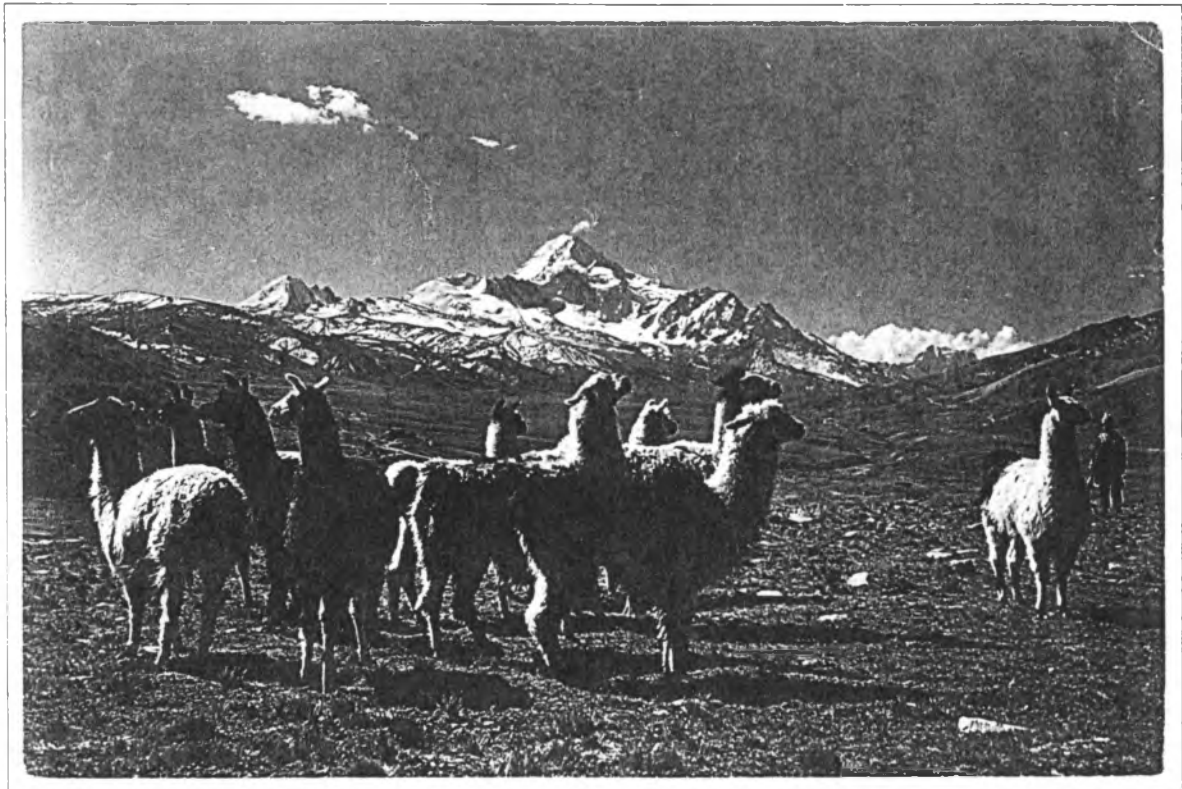
# CAMBRIDGE GEOLOGICAL PROJECT - BOLIVIA 1994

*Patrons:*

**Lord St John of Fawsley**

**Prof. I N McCave**

(Head of Earth Sciences Cambridge University)



Approved by The Royal Geographical Society  
The Cambridge Expeditions Committee  
and The Mount Everest Foundation



# CAMBRIDGE GEOLOGICAL PROJECT BOLIVIA 1994

## PATRONS

Lord St John of Fawsley (Master of Emmanuel College)

Prof. I N McCave (Head of Earth Sciences, Cambridge University)

## MEMBERS

**Matthew Wetherall**, 21: Expedition Leader. Third year undergraduate geology student at Emmanuel College, Cambridge University

**Simon Shercliff**, 21: Medical Officer. Third year undergraduate geology student at St. Catharine's College, Cambridge University.

**Ben Reynolds**, 20: Logistics Officer. Third year undergraduate geology student at St. Catharine's College, Cambridge University.

## SUMMARY

The purpose of the expedition was to prepare a geological map of a section of the Bolivian Altiplano. The area to be mapped was known to be of interest but had not been previously mapped geologically at scales more detailed than 1:100,000.

The project successfully drafted a 1:10,000 geological map of the proposed 45km<sup>2</sup> area. A copy of this together with rock descriptions and geological cross-sections, has been sent to the Bolivian Geological Survey to assist them in their interpretation of a complicated area that lies within a larger-scaled map they are preparing so as to gain a better understanding of the formation and geological history of the Altiplano.

The mapping project also fulfilled the statutory requirements of our degrees.

## DURATION OF EXPEDITION

July to September 1994.

## LOCATION

Corocoro (4000m), the Altiplano, Bolivia. Three hours drive south west of La Paz. Lon. 68°27' West Lat. 17°10' South

## PRE-EXPEDITION PLANNING

As geology undergraduates we have to carry out a geological mapping project which forms a statutory part of our degree. The choice of project location was left up to us and so we decided to go to Bolivia - a country which contains a large amount of poorly understood, but well exposed and interesting geology. Geology projects from Cambridge to Bolivia have been successful in the past and we already had a contact at a mining consultancy in La Paz, the capital.



In October 1993 the project started to take form as the three of us combined our ideas and plans into a package which we thought would make a successful geology expedition. By the end of November we had chosen to map an area near the town of Jesus de Machaca (just to the south of Lake Titicaca) and had prepared a prospectus and budget which we put before the Cambridge Expeditions Committee (CEC).

Early in December we received approval from the CEC which gave us the recognition we needed to go ahead with our sponsorship campaign. By mid-January we had sent out our *begging* letters to charitable trusts, companies and equipment manufacturers and awaited their replies. In April 1994 we received approval (but no grants) from both The Royal Geographical Society and The Mount Everest Foundation.

## SUMMARY OF ACCOUNTS

<u>Credit</u>	<u>£</u>
Albert Reckitt Charitable Trust	500
A.K.S. Morton Charitable Trust	300
Cambridge Expeditions Fund	300
Gilchrist Educational Trust	250
Russel and Mary Foreman 1980 Charitable Trust	75
Emmanuel College	250
St Catharine's College	400
Vacation Studies	1213
Personal Contributions*	3000
<u>Total</u>	<u>6288</u>

<u>Debit</u>	<u>£</u>
Flights and airport taxes	1953
Vehicle Expenses	159
Fuel	190
Local Travel	70
Accomadation	174
Food	412
Geological Equipment and Maps	364
Expedition Equipment	2100
Medical	146
Insurance	357
Photographic	106
Pre-Expedition administration	157
Post-Expedition administration	100
<u>Total</u>	<u>6288</u>

\* A donation from the Duke of Edinburgh is included in the personal donations, as are contributions from family, friends and the expedition members.

## SPONSORSHIP

We also received sponsorship from the following companies:

British Motors Bolivia (*Jeep + Driver*)  
 Kall-Kwik Print Copy Design (*colour printing of Expedition brochures*)  
 Sir Charles Chadwick-Healey (*Purchase of photographic films*)  
 Wild Country (*Expedition Equipment*)  
 Open Air (*Expedition Equipment*)  
 Rab (*Expedition Equipment*)

## ACKNOWLEDGEMENTS

We would like to thank the following bodies for granting approval to our expedition:

The Royal Geographical Society  
 The Mount Everest Foundation  
 Cambridge Expeditions Committee

We would also like to thank:

Our patrons, Lord St John of Fawsley and Professor McCave; everyone in The Department who has helped us over the last year; Rudolfo and Alfredo from Mintec for their time and allowing us to use their offices; GEOBOL; Gonchi and Vicky Gomez for making our stay in Corocoro so pleasant; Dr Simon Lamb for his help and advice on Bolivia; Andy Jackson, Juan and British Motors Bolivia whose help with logistics in Bolivia was invaluable; and especially to all our sponsors for making the project possible.



*Hitch-hikers*



1994  
**BOLIVIA**